



"Eagles is a wonderful home. Communication is excellent. The health and safety of everyone is the top priority. Knowing Mum is 100% safe and well cared for is what we were looking for."

(Testimonial from a family member)

Eagles Mount  
Green Community Home



# Our core values



Care staff team represent who we are and what we do. Our staff team have agreed our values which support the vision, shape the culture and reflect our company. They are the essence of the company's identity, our principles, beliefs, philosophy and shape the care we provide.

## Caring

We have people's best interests at heart. We do all that we can to maintain or improve their well-being.

## Passionate

We are passionate about delivering a high standard of care. It's an energy that comes from within and cannot be forced.

## Respectful

We treat people with courtesy and politeness. We treat people the same no matter their race, sexuality, religion, gender, appearance, age, or country of origin.

## Compassionate

We respond with humanity, understanding and kindness to each person's pain, distress, anxiety or need.

## Honesty

We promote openness which, empowers us and enables us to develop consistency in how we present the facts. Honesty sharpens our perception and allows us to observe everything around us with clarity.

## Loyalty

We work collaboratively with the people who live in the home, family members, colleagues and visitors to enable positive outcomes and achieve goals.

## Reliable

We aim to provide consistently good care at a quality that meets that expectation for all stakeholders.

## Kind

Our team place great emphasis on being considerate, helpful and tender.

## Open-Minded

As a company we are both receptive to new ideas and act in an unprejudiced, unbigoted and impartial manner.

## Nurturing

It is our intention for those who use or work at our service to be nurtured and empowered to develop their confidence.

# You're always welcome at Eagles Mount

---

Eagles Mount is a growing community with shared values and ideas. We believe that age should not be a barrier to living a fulfilling life. We are a home away from home where individuality is celebrated and where everyone feels welcomed.

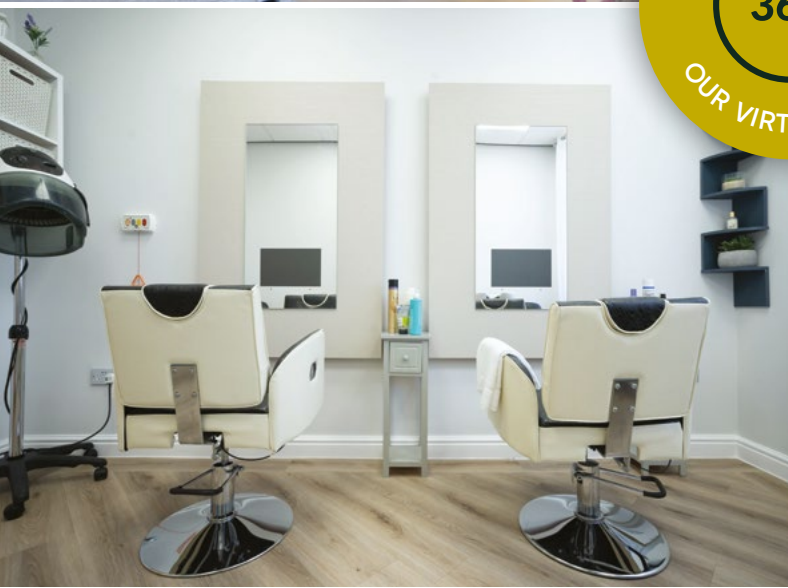
Situated in the heart of Poole, the Eagles Mount Green Community boasts stunning harbour views and offers more than a traditional care home. We provide a place to stay that offers and encourages community experiences to promote well-being and quality of life.

As a forward-thinking community, we are proud to say that Eagles Mount is the first in the UK to be Carbon Neutral. We are mindful of the environment so our grandchildren can continue to enjoy this beautiful world both today and tomorrow. Not only do we source food responsibly, we ensure it is of highest quality while supporting our local farmers. Our innovations extends to using the latest

technology on a day to day basis to reduce our use of paper; disposing of waste in line with our green credentials and using solar power to further enhance our service.

The service we offer is directed by those who benefit and use it. Our staff are supportive, compassionate, caring and kind. We provide as little or as much care as is required to ensure that those who live at Eagles Mount feel safe, secure and happy. There are a range of activities including book club, yoga, socialising to name a few. Eagles Mount is full of laughter, creativity, patience and humour, where everyday is different, and family is at heart of everything we do.





25 Birds Hill Road, Poole, Dorset, BH15 2QJ  
T. 01202 671 111 | E. info@luxurycare.co.uk  
[www.eaglesmount.co.uk](http://www.eaglesmount.co.uk)

